

*a new SMOOTH
experience...*



smooth
EXPERIENCE

step by step

a new SMOOTH *experience...*

1 LINE 4 RITUALS

A brand new line to meet the needs of women who desire smooth, healthy-looking, rejuvenated and disciplined hair with immediate but lasting effects.

From perfect smoothness to the enhancement of the natural texture, for fluid, shiny and defined hair.

smooth EXPERIENCE is a versatile and professional collection of 6 highly performing products designed to create 4 different beauty rituals: FILLER HIGH GLOSS SPA, GLASS HAIR LAMINATION, GOODBYE FRIZZ and PERFECT SMOOTH.

EXPRESS

1

FAST & EASY

filler high gloss SPA

no heat tools

EXPRESS RITUAL

*Plumps, restructures
and rejuvenates hair by eliminating
imperfections.*

*Same times and rituals as a
standard hair care service but with
high-performance products.*

the result...

*Immediate softness, shine
and fullness up to 4 weeks.*

*Hair is lightweight
and clean for longer.*

| COLD BOTOX-LIKE |

EXPRESS

2

FAST & EASY

glass hair lamination

EXPRESS RITUAL

*The treatment loved by influencers
and celebrities around the world.*

High gloss cosmetic lifting.

the result...

*Immediate shine, softness and
smoothness for up to 4 weeks.*

THERAPY

3

goodbye frizz

THERAPY RITUAL

Loose the frizz and keep your curls!
*Transforms wavy, curly, voluminous and
frizzy hair into more manageable hair,
controlling frizz, reducing volume while
keeping the natural shape of the hair*

the result...

*Curly and wavy hair is defined,
manageable and soft
for up to 10 weeks.*

| HOT BOTOX-LIKE |

THERAPY

4

perfect smooth

THERAPY RITUAL

*Transforms frizzy, curly and wavy
hair into perfectly smooth,
silky and disciplined hair,
remodeling the hair structure
without stressing it.*

the result...

*Super smooth, shiny and
manageable hair up to 10 weeks.*

| HOT BOTOX-LIKE |

EXPRESS RITUALS

filler high gloss SPA *no heat tools* EXPRESS RITUAL

COLD BOTOX-LIKE

EXPRESS

1

*Plumps, restructures
and rejuvenates hair by eliminating
imperfections.*

*Same times and rituals as a
standard hair care service but with
high-performance products.*

the result...

*Immediate softness, shine
and fullness up to 4 weeks.*

*Hair is lightweight
and clean for longer.*

25

products set



PRE-TREAT
SHAMPOO



FILLER
CONDITIONER



INSTANT HIGH
GLOSS WATER



HAIR FILLER
SERUM

FAST & EASY

glass hair lamination EXPRESS RITUAL

*The treatment loved by influencers
and celebrities around the world.*

High gloss cosmetic lifting

the result...

*Immediate shine, softness and
smoothness for up to 4 weeks.*

35

products set



PRE-TREAT
SHAMPOO



FILLER
CONDITIONER



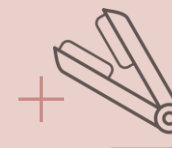
INSTANT HIGH
GLOSS WATER



HAIR FILLER
SERUM



HD SMOOTH
AND PROTECT



FAST & EASY

step 1



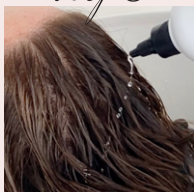
Apply **PRE-TREAT SHAMPOO** to damp hair. Create an even lather, then rinse. In case of resistant, natural, coarse hair, shampoo twice.

step 2



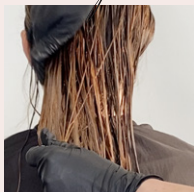
Apply **FILLER CONDITIONER** to towel-dried hair focusing on the lengths and ends and leave on for 10 minutes then rinse.

step 3



After rinsing, apply **INSTANT HIGH GLOSS WATER**, to damp hair, focusing on the lengths and ends. Comb to distribute evenly and rinse.

step 4



Apply **HAIR FILLER SERUM** to towel-dried hair, then proceed with drying the hair, with brush or diffuser.

Home maintenance is essential to prolong in-salon results. To maintain smooth, soft and shiny hair we recommend the use of **FILLER SHAMPOO**, **FILLER CONDITIONER** and **HAIR FILLER SERUM**.

the result...

Immediate softness, shine and fullness up to 4 weeks.

Hair is lightweight and clean for longer.

before

after



...wavy
or smooth



technical tips

If using after colouring service, gently cleanse the hair with an after colour shampoo (do not use **PRE-TREAT SHAMPOO**) then proceed with step 2.

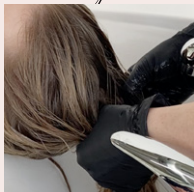
If using after re-growth colour service, when rinsing the colour, use **PRE-TREAT SHAMPOO** for the second shampoo, then proceed with step 2.

step 1



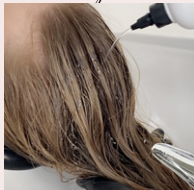
Apply **PRE-TREAT SHAMPOO** to damp hair. Create an even lather, then rinse. In case of resistant, natural, coarse hair, shampoo twice.

step 2



Apply **FILLER CONDITIONER** to towel-dried hair focusing on the lengths and ends. Comb to distribute evenly. Leave to process for 10 minutes then rinse.

step 3



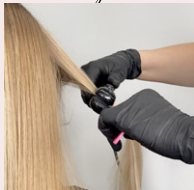
After rinsing, apply **INSTANT HIGH GLOSS WATER**, to damp hair, focusing on the lengths and ends. Comb to distribute evenly and rinse.

step 4



Apply **HAIR FILLER SERUM** to towel-dried hair, then proceed with drying the hair working directly with the heat of a hair dryer and brush.

step 5



Once dry, divide the hair into 4 sections with a cross-shaped parting. Apply a generous amount of **SMOOTH AND PROTECT HD** spray thermo-protector and iron the hair 2/3 times at low temperature, focusing on lengths and ends.

Home maintenance is essential to prolong in-salon results. To maintain smooth, soft and shiny hair we recommend the use of **FILLER SHAMPOO**, **FILLER CONDITIONER** and **HAIR FILLER SERUM**.

the result...

Immediate shine, softness and smoothness
for up to 4 weeks.

before



after



smooth
& shiny

high gloss
effect



technical tips

If using after colouring service, gently cleans the hair with an after colour shampoo (do not use **PRE-TREAT SHAMPOO**) then proceed with step 2.

If using after re-growth colour service, when rinsing the colour, use **PRE-TREAT SHAMPOO** for the second shampoo, then proceed with step 2.

THERAPY 3

goodbye frizz

THERAPY RITUAL

*Loose the frizz and keep your curls!
Transforms wavy, curly, voluminous
and frizzy hair into more manageable hair,
controlling frizz, reducing volume while
keeping the natural shape of the hair*

the result...

*Curly and wavy hair is defined,
manageable and soft
for up to 10 weeks.*

products set



HOT BOTOX-LIKE

THERAPY 4

perfect smooth

THERAPY RITUAL

*Transforms frizzy, curly and wavy
hair into perfectly smooth,
silky and disciplined hair,
remodeling the hair structure
without stressing it.*

the result...

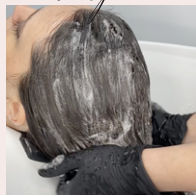
*Super smooth, shiny and
manageable hair up to 10 weeks.*

products set



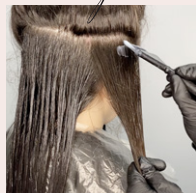
HOT BOTOX-LIKE

step 1



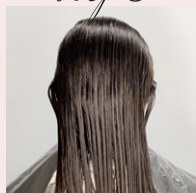
Apply **PRE-TREAT SHAMPOO** to damp hair. Create an even lather, then rinse. In case of resistant, natural, coarse hair, shampoo twice. Dry the hair completely with a brush and hairdryer.

step 2



Wear gloves. Use the product ensures that the room is well ventilated. Pour the **SMOOTHING FLUID** into a bowl. To determine the right quantity of product consider the length, diameter, porosity and density of the hair. Divide the hair into sections and apply **SMOOTHING FLUID** through the hair keeping a distance of 0,5 cm from the roots using a brush and hands to ease the penetration of the fluid into the hair. Comb the hair and let it process.

step 3



Allow the product to process:

up to 40 minutes - coarse, curly, very frizzy, natural hair

up to 30 minutes - medium, wavy, colored hair

up to 20 minutes - fine, damaged, bleached hair or with highlights

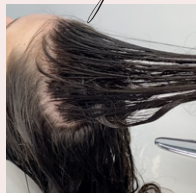
After processing, rinse the hair for a few seconds to remove excess product.

step 4



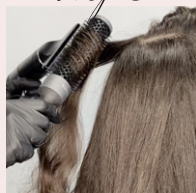
Dry the hair completely with a brush and hairdryer. Starting from the roots, take 0,5 cm sections, iron the hair, from the roots to the ends, as indicated in the table. Visually check the result to verify the correct temperature and stability of the colour*. Increase the number of passes in the areas where hair is stronger, such as the roots.

step 5



Rinse the hair, apply **FILLER CONDITIONER** to towel-dried hair focusing on the lengths and ends. Comb to distribute evenly. Leave to process for 10 minutes then rinse.

step 6



Towel-dry the hair. Apply the **HAIR FILLER SERUM**, comb the hair and style it. For extra shine and flexibility, apply **HD SMOOTH AND PROTECT** through lengths and ends, dry the hair and style it.

the result...

Curly and wavy hair is defined, manageable and soft for up to 10 weeks.

before



after



...defined wavy hair

technical table

TYPE OF HAIR	TEMPERATURE OF FLAT IRON	NUMBER OF PASSAGES/STROKES
Coarse, curly, very frizzy, natural hair	190/200 °C	4/5
Medium, wavy, colored hair	180/190 °C	3/4
Fine, damaged, bleached hair or with highlights	170/190 °C	2/3

The data showed in the table is purely indicative. It is always necessary to assess each individual case. In the case of heavily bleached or damaged hair, do not exceed a temperature of 180°.

IMPORTANT NOTES: This is a *therapy*, the best result is obtained the following day after allowing the hair time to absorb all the nourishment from the keratin and amino acids. Do not wash the hair for at least 48 hours. **SERVICES THAT ARE RACOMENDED ON DIFFERENT DAYS.** If performing a colour service we recommend that you carry out the chosen THERAPY RITUAL first and color the hair three or more days later, it is important to shampoo the hair at least once between the THERAPY RITUAL and color services. To achieve the best results perform the THERAPY RITUAL in between colour services. Ideally a week or two before the colour service. For refreshing lengths we recommend the use of OMNIPLEX BLOSSOM GLOW TONER. If highlighting/full-head bleaching first choose the temperature of the straightening irons for the THERAPY RITUAL very carefully. If the temperature is too high, the color could lighten even more and/or create unwanted tones. If Highlighting/ full-head bleaching after the THERAPY RITUAL service be careful when choosing the peroxide strength for the bleach mixture. Use 5/10 volume (no stronger!) because lightening is faster after a THERAPY RITUAL. Shampoo the hair at least once between the THERAPY RITUAL and color services.

*Applying the fluid could slightly alter hair colour. For cool blonde or white/grey hair mix AMETHYSTE COLORING MASK SILVER with FILLER CONDITIONER in a 1:1 mixing ratio to prevent yellowing. Allow to process for 10 minutes. For warm blonde hair mix AMETHYSTE COLORING MASK BLOND with FILLER CONDITIONER in a 1:1 mixing ratio and allow to process for 10 minutes. If you wish to further refresh brown, red or copper hair it is possible to use AMETHYSTE COLORING MASKS with the same mixing ratio (1:1).

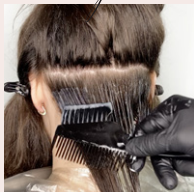
Home maintenance is essential to prolong in-salon results. To maintain smooth, soft and shiny hair we recommend the use of **FILLER SHAMPOO**, **FILLER CONDITIONER** and **HAIR FILLER SERUM**.

step 1



Apply **PRE-TREAT SHAMPOO** to damp hair. Create an even lather, then rinse. In case of resistant, natural, coarse hair, shampoo twice. Dry the hair completely with a brush and hairdryer.

step 2



Wear gloves. Use the product ensures that the room is well ventilated. Pour the **SMOOTHING FLUID** into a bowl. To determine the right quantity of product consider the length, diameter, porosity and density of the hair. Divide the hair into sections and apply smoothing fluid through the hair keeping a distance of 0,5 cm from the roots using a brush and hands to ease the penetration of the fluid into the hair. Comb the hair and let it process.

step 3



Allow the product to process:

up to 45 minutes - coarse, curly, very frizzy, natural hair

up to 35 minutes - medium, wavy, colored hair

up to 25 minutes - fine, damaged, bleached hair or with highlights.

After processing, rinse the hair for a few seconds to remove excess product.

step 4



Dry the hair completely with a brush and hairdryer. Starting from the roots, take 0,5 cm sections, iron the hair, from the roots to the ends, as indicated in the table. Visually check the result to verify the correct temperature and stability of the colour*. Increase the number of passes in the areas where hair is stronger, such as the roots.

step 5



Rinse the hair, apply **HAIR FILLER CONDITIONER** to towel-dried hair focusing on the lengths and ends. Comb to distribute evenly. Leave to process for 10 minutes then rinse.

step 6



Towel-dry the hair. Apply the filler serum, comb the hair and style it. For extra shine and flexibility, apply **HD SMOOTH AND PROTECT** through lengths and ends, dry the hair and style it.

the result...

Super smooth, shiny and manageable hair
up to 10 weeks.

before



after



perfectly smooth... technical table

TYPE OF HAIR	TEMPERATURE OF FLAT IRON	NUMBER OF PASSAGES/STROKES
Coarse, curly, very frizzy, natural hair	200/210 °C	9/10
Medium, wavy, colored hair	190/200 °C	6/8
Fine, damaged, bleached hair or with highlights	170/190 °C	4/5

The data showed in the table is purely indicative. It is always necessary to assess each individual case. In the case of heavily bleached or damaged hair, do not exceed a temperature of 180°.

IMPORTANT NOTES: This is a *therapy*, the best result is obtained the following day after allowing the hair time to absorb all the nourishment from the keratin and amino acids. Do not wash the hair for at least 48 hours. **SERVICES THAT ARE RACOMMENDED ON DIFFERENT DAYS.** If performing a colour service we recommend that you carry out the chosen THERAPY RITUAL first and color the hair three or more days later, it is important to shampoo the hair at least once between the THERAPY RITUAL and color services. To achieve the best results perform the THERAPY RITUAL in between colour services. Ideally a week or two before the colour service. For refreshing lengths we recommend the use of OMNIPLEX BLOSSOM GLOW TONER.

If highlighting/full-head bleaching first choose the temperature of the straightening irons for the THERAPY RITUAL very carefully. If the temperature is too high, the color could lighten even more and/or create unwanted tones. If Highlighting/ full-head bleaching after the THERAPY RITUAL service be careful when choosing the peroxide strength for the bleach mixture. Use 5/10 volume (no stronger!) because lightening is faster after a THERAPY RITUAL. Shampoo the hair at least once between the THERAPY RITUAL and color services.

*Applying the fluid could slightly alter hair colour. For cool blonde or white/grey hair mix AMETHYSTE COLORING MASK SILVER with FILLER CONDITIONER in a 1:1 mixing ratio to prevent yellowing. Allow to process for 10 minutes. For warm blonde hair mix AMETHYSTE COLORING MASK BLOND with FILLER CONDITIONER in a 1:1 mixing ratio and allow to process for 10 minutes. If you wish to further refresh brown, red or copper hair it is possible to use AMETHYSTE COLORING MASKS with the same mixing ratio (1:1).

Home maintenance is essential to prolong in-salon results. To maintain smooth, soft and shiny hair we recommend the use of **FILLER SHAMPOO**, **FILLER CONDITIONER** and **HAIR FILLER SERUM**.

step 1

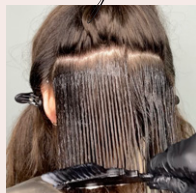


Apply **PRE-TREAT SHAMPOO** and rinse.

Apply again the **PRE-TREAT SHAMPOO** and leave on for 5 min heating the hair (heat source) and then rinse.

Dry the hair completely with a brush and hairdryer.

step 2



Wear gloves. Use the product ensure that the room is well ventilated.

Pour 90 ml of **SMOOTHING FLUID** into a bowl or more fluid depending the lengths of the hair density or porosity of the hair. Divide the hair into 4/6 sections depending the density of the hair and apply smoothing Fluid on 0,5 cm section of hair keeping a distance of 0,5 cm from the roots using brush and hands to help the penetration of the fluid into the hair. Comb the hair and let it process.

step 3

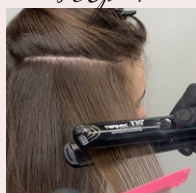


Allow the product to process **60 minutes**.

After processing clean the hair using towel to remove excess of product.

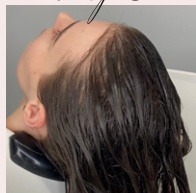
IMPORTANT NOTE: if hair looks too wet, use the excess product for the next session.

step 4



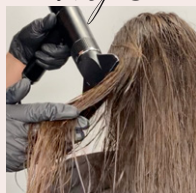
Dry the hair completely with a brush and hairdryer. Wait 3 minutes and then starting from the roots take 0,5 cm section, iron the hair, from the roots to the ends, as indicated in the table. Visually check the result to verify the correct temperature and stability of the color. Increase the number of passages/strokes in the area where the hair is stronger, such as the roots.

step 5



Rinse the hair apply **FILLER CONDITIONER** to towel-dried hair focusing on the lengths and ends. Comb to distribute evenly. Leave to process for 10 minutes then rinse.

step 6



Towel-dry the hair. Apply the **HAIR FILLER SERUM**, comb the hair and style it. For extra shine and flexibility apply **HD SMOOTH AND PROTECT SPRAY** through lengths and ends. Dry the hair and style it by iron.

the result...

Super smooth, shiny and manageable hair
up to 10 weeks.

before

after



coarse
and very frizzy...

difficult, coarse, very curly,
and very frizzy hair



technical table

TYPE OF HAIR	TEMPERATURE OF FLAT IRON	NUMBER OF PASSAGES/STROKES
Difficult, coarse, very curly, very frizzy hair	200/210 °C	9/10

The data showed in the table is purely indicative. It is always necessary to assess each individual case. In the case of heavily bleached or damaged hair, do not exceed a temperature of 180°.

IMPORTANT NOTES: This is a *therapy*, the best result is obtained the following day after allowing the hair time to absorb all the nourishment from the keratin and amino acids. **DO NOT WASH THE HAIR FOR AT LEAST 48 HOURS.** SERVICES THAT ARE RACOMMENDED ON DIFFERENT DAYS. If performing a colour service we recommend that you carry out the chosen THERAPY RITUAL first and color the hair three or more days later, it is important to shampoo the hair at least once between the THERAPY RITUAL and color services. To achieve the best results perform the THERAPY RITUAL in between colour services. Ideally a week or two before the colour service. For refreshing lengths we recommend the use of OMNIPLEX BLOSSOM GLOW TONER. If highlighting/full-head bleaching first choose the temperature of the straightening irons for the THERAPY RITUAL very carefully. If the temperature is too high, the color could lighten even more and/or create unwanted tones.

If Highlighting/ full-head bleaching after the THERAPY RITUAL service be careful when choosing the peroxide strength for the bleach mixture. Use 5/10 volume (no stronger!) because lightening is faster after a THERAPY RITUAL. Shampoo the hair at least once between the THERAPY RITUAL and color services.

*Applying the fluid could slightly alter hair colour. For cool blonde or white/grey hair mix AMETHYSTE COLORING MASK SILVER with FILLER CONDITIONER in a 1:1 mixing ratio to prevent yellowing. Allow to process for 10 minutes. For warm blonde hair mix AMETHYSTE COLORING MASK BLOND with FILLER CONDITIONER in a 1:1 mixing ratio and allow to process for 10 minutes. If you wish to further refresh brown, red or copper hair it is possible to use AMETHYSTE COLORING MASKS with the same mixing ratio (1:1).

Home maintenance is essential to prolong in-salon results. To maintain smooth, soft and shiny hair we recommend the use of **FILLER SHAMPOO**, **FILLER CONDITIONER** and **HAIR FILLER SERUM**.

3

HAIR FILLER
SERUM



2

FILLER CONDITIONER



1

FILLER SHAMPOO



smooth EXPERIENCE home care

A home maintenance line to prolong the results of salon rituals. A real smoothing and high gloss ritual to be performed at home in 3 simple steps: shampoo, conditioner and serum for disciplined, soft and shiny hair.

Formulated with Amino Acids, Hydrolyzed Vegetal Keratin, Hyaluronic Acid and Omniplex Technology

FILLER SHAMPOO

Plumping, smoothing and restoring shampoo. Acid pH formula, replumping and restoring. it gently cleanses while revitalizing and strengthening the fiber structure for frizz free hair.

For manageable, silky soft and shiny hair.

How to use: apply to wet hair, massage gently and rinse.



FILLER CONDITIONER

Plumping, smoothing and restoring conditioner. Ultra rich, plumping, smoothing and restoring formula. It intensely nourishes the hair by revitalizing and strengthening the fiber structure, for frizz free hair.

For manageable, silky soft and shiny hair.

How to use: after shampooing, apply to towel-dried hair and comb through. Leave on 10 minutes, then rinse.

HAIR FILLER SERUM

Intensive restoring, replumping and illuminating leave-in serum.

The intense formula, rich in active ingredients, helps to instantly restore, nourish and revitalize the hair fiber from the very first use.

How to use: apply to towel-dried hair before styling.



the result...

Disciplined, soft and shiny hair, at home as in the salon.

smooth EXPERIENCE

discover more

FARMAVITA.COM

